

Allen, Pam, NMENV

From: Maestas, Ricardo, NMENV
Sent: Thursday, March 06, 2014 2:27 PM
To: Allen, Pam, NMENV
Subject: FW: Sampling data for today's call
Attachments: Low Volume Air Sampling Sites.pdf; Station A and B Filter Readings 23 Feb 2014.xlsx

Email and attachment for WIPP file

From: Kliphuis, Trais, NMENV
Sent: Monday, February 24, 2014 9:40 AM
To: Maestas, Ricardo, NMENV
Subject: FW: Sampling data for today's call

Trais Kliphuis
WIPP Staff Manager
Hazardous Waste Bureau
New Mexico Environment Department
2905 Rodeo Park Drive E, Building 1
Santa Fe, New Mexico 87505

Office: 505-476-6051
Front Desk: 505-476-6000

From: Oba Vincent [<mailto:oba.vincent@cbfo.doe.gov>]
Sent: Sunday, February 23, 2014 12:52 PM
To: Kliphuis, Trais, NMENV; 'peake.tom@epa.gov'; Edwards, Jonathan; Walsh, Jonathan; Perrin, Alan; 'Bob.Kehrman@wipp.ws'; 'Rick.Chavez@wipp.ws'
Cc: George Basabilvazo - WIPPNet
Subject: Sampling data for today's call

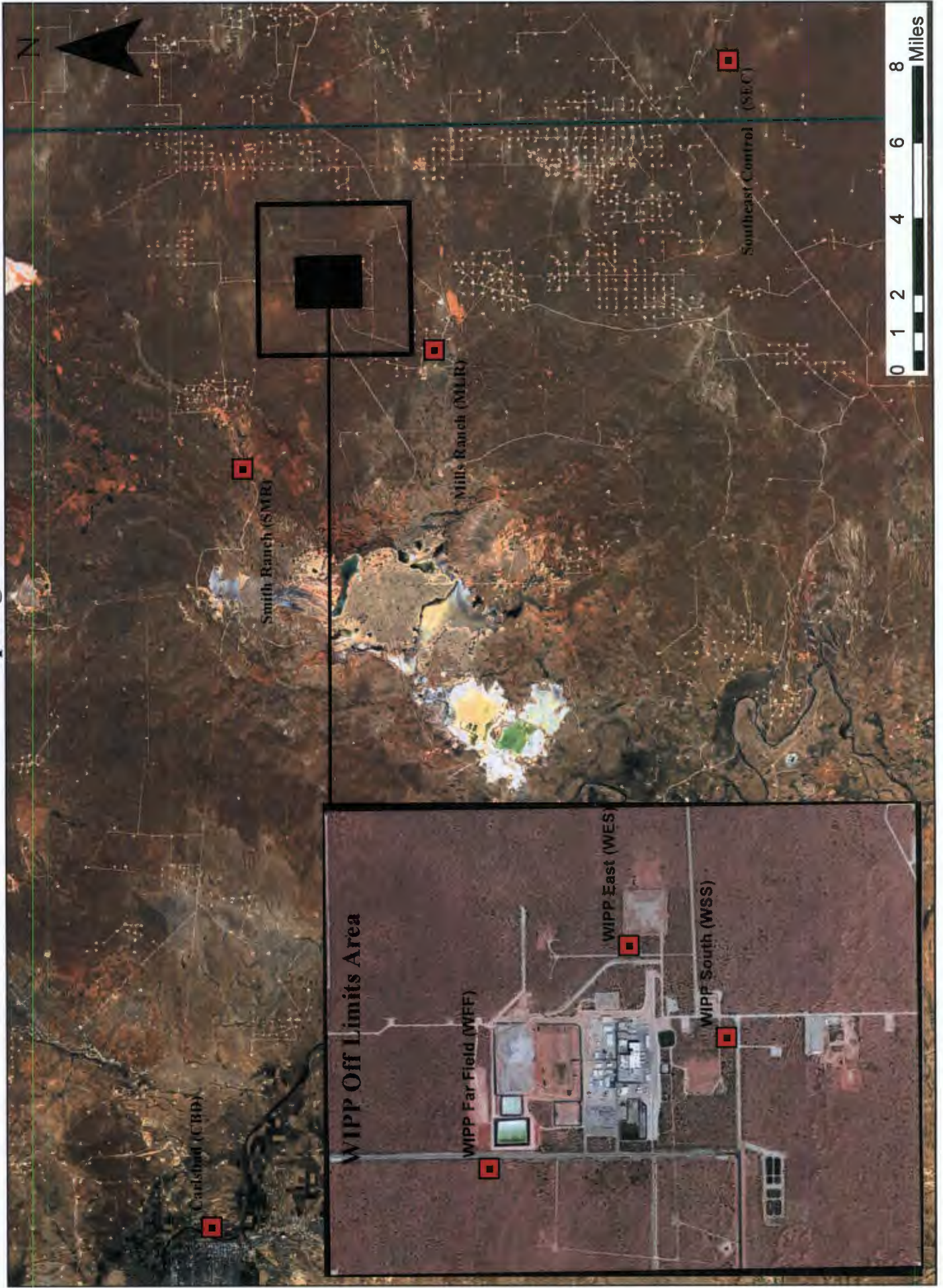
Attached is the sample data for today's call. We do have some new data to share from the environmental samplers and the station A and B sample results. I also included a graphic showing the sampler locations.

Results were obtained from air samples collected on 18 Feb from the Mills Ranch (2.7 DPM), Smith Ranch (4.2 DPM), and Carlsbad (1.3 DPM) sampling locations.

Thanks

Oba

Air Sampling Sites



Preliminary Information – Not for Public Release

Station A (A-2-3) Before the HEPA Filters

Date	Time Installed	Time Removed	Filter ID	Inst Model	Count Time	Alpha (dpm)	Beta (dpm)	First Count	Alpa (dpm)	Beta (dpm)	Re-count	Location	Lab Results
2/14/14	2/14/14 @ 0742	2/15/14 0630	A23021414	Tennelec XLB	10 Mins	4400000	1200000	021514/0649				WIPP Labs	
2/15/14	2/15/14 0630	2/15/14 0840	A23021514	Tennelec XLB	10 Mins	225000	468000	021514/0916				WIPP Labs	
2/15/14	2/15/14 0840	2/15/14 1510	A23021514 0840	Tennelec XLB	10 Mins	285000	540000	021514/1541				SRS Lab	
2/15/14	2/15/14 1510	2/15/14 2330	A23021514 1510	Tennelec XLB	10 Mins	124050	24481	021614/0012				SRS Lab	
2/15/14	2/15/14 2330	2/16/14 0850	A23021514 2330	Tennelec XLB	10 Mins	47283	10558	021614/0917				On Site	
2/16/14	2/16/14 0850	2/16/14 1648	A23021614 0850	Tennelec XLB	10 Mins	12215	2842	121614/1927				On Site	
2/16/14	2/16/14 1648	2/17/14 0015	A23021614 1650	Tennelec XLB	10 Mins	4051	1256	021714/0046				On Site	
2/17/14	2/17/14 0015	2/17/14 0820	A23021714 0015	Tennelec XLB	10 Mins	1802	638	021714/0942	1723	573	021714/1012	On Site	
2/17/14	2/17/14 0820	2/17/14 1620	A23021714 0820	Tennelec XLB	10 Mins	1048	621	021714/1705				On Site	
2/17/14	2/17/14 1620	2/18/14 0010	A23021714 1620	Tennelec XLB	10 Mins	802	633	021814/0051	633 592	230 210	021814/101 2 021814/075 1	On Site	
2/18/14	2/18/14 0010	2/18/14 0820	A23021814 0010	Tennelec XLB	10 Mins	326	338	021814/0928	237 212	157 116	021814/120 2 021814/182 4	On Site	

Preliminary Information – Not for Public Release

2/18/14	2/18/14 0820	2/18/14 1605	A23021814 0820	Tennelec XLB	10 Mins	609	780	021814/1624	258	118	021914/0315	On Site	
2/18/14	2/18/14 1605	2/19/14 0035	A23021814 1605	Tennelec XLB	10 Mins	346	340	021914/0143	227	143	021914/0547	On Site	
2/19/14	2/19/14 0035	2/19/14 0823	A23021914 0040	Tennelec XLB	10 Mins	224	320	021914/0952	136	143	021914/1222	On Site	
2/19/14	2/19/14 0823	2/19/14 1600	A23021914 0823	Tennelec XLB	10 Mins	264	443	021914/1708	130	137	021914/2046	On-Site	
2/19/14	2/19/14 1600	2/20/14 0018	A23021914 1600	Tennelec XLB	10 Mins	286	378	022014/0124	150	119	02214/0352	On-Site	
2/19/14	2/19/14 0018	2/20/14 0817	A23022014 0018	Tennelec XLB	10 Mins	290	219	022014/1010	216	146	022014/1256	On-Site	
2/20/14	2/20/14 0817	2/20/14 1624	A23022014 0817	Tennelec XLB	10 Mins	135	131	0222014/183	107	85	022014/2204	On-Site	
2/20/14	2/20/14 1624	2/21/14 0012	A23022014 1624	Tennelec XLB	10 Mins	231	103	022114/0154	203	84	022114/0505	On-Site	
2/20/14	2/21/14 0012	2/21/14 0845	A23022114 0012	Tennelec XLB	10 Mins	330	146	022114/1027	286	105	022114/1532	On-Site	
2/21/14	2/21/14 0845	2/21/14 1620	A23022114 0845	Tennelec XLB	10 Mins	253	199	022114/1654	175	86	022114/2000	On-Site	
2/21/14	2/21/14 1620	2/22/14 0050	A23022114 1620	Tennelec XLB	10 Mins	388	549	022214/0124	215	154	022214/0400	On-Site	
2/22/14	2/22/14 0050	2/22/14 0830	A23022214 0050	Tennelec XLB	10 Mins	421	599	022214/0906	180	154	022214/1150	On-Site	